

X-200 PRO User Manual

Statement:

This handbook is the manual of X-200 PRO. Without the written permission from the manufacturer, any company or individual shall not copy or backup it in any form (electronic, mechanical, photocopying, recording or otherwise). This manual is only operating instructions for X-200 PRO. If any result caused by using it on other equipment, the company does not assume any responsibility for it.

If not quality problems of X-200 PRO: such as equipment failure caused by user abuse or misuse, unauthorized disassembly, repair equipment yourself, not operate or maintain by the instructions, lose it, the repair will not be free. Other product names mentioned in this manual are in order to describe how to use X-200 PRO, and their owners are still the original company.

X-200 PRO and files are used for normal vehicles maintenance; If used for illegal purposes, the company does not assume any liability.

Content

Chapter1:Summary.....	1
1.1 Features.....	1
1.1.1 Universal.....	1
1.1.2 Advantages.....	1
1.1.3 Durability.....	1
1.2 Introduction of the device.....	2
1.2.1 The main unit and accessories.....	2
1.3 Hardware technical Specification.....	3
1.4 Functions Setting.....	3
1.4.1 System Setting.....	4
1.4.1.1 Language Selected.....	4
1.4.1.2 Contrast Adjustment.....	4
1.4.1.3 Metric/Inch.....	5
1.4.1.4 Data Logging.....	5
1.4.2 System Information.....	6
1.4.3 Device self-test.....	6
Chapter2: How to update software for X-200 PRO.....	7
2.1 Update tool software installation.....	7
2.2 Register.....	10
2.3 Software updating.....	11

Chapter1: Summary

1.1 Features

1.1.1 Universal

1.1.2 Advantages

- Providing multi-language environment so it can be used in different countries and regions.
- The main unit system uses ARM high-speed chip to keep it running fast, stable, and anti-jamming.
- Support updating via TF card. You can update the software at any time.
- With modern design and high-definition true color screen to realize the integration of automotive industry and electronic information technologies and make auto diagnostic and key programming more easier, practical and economical.

1.1.3 Durability

- Integrity structure design, Drop and Shock Resistance, and durable.
- Industrial design to ensure the tool work stable in harsh environment such as high temperature, low temperature, etc.

1.2 The introduction of the device

1.2.1 The Main unit and accessories (picture as below)



Name	Instruction
Testing cable interface	Connect to the main testing cable for key programming
USB interface	For connecting USB cable
TF Card Slot	To store diagnostic program and data
F1	Keyboard input option key
Left	To left
Enter	OK
ESC	Exit or give up
Screen	Show information
F2	Other functions option
UP	UP
Right	To right
Down	Down

1.3 Hardware Specification

- ★ Dimension: 192mm(L) *93mm(W) *29mm(H)
- ★ CPU: ARM7
- ★ Power Supply: DC12V
- ★ Operation Power: DC12V
- ★ Operating Temperature: -10-60℃
- ★ Display Screen: 160×160 TFT Screen

1.4 Functions Setting

Power on,and then press ENTER on the screen,then go to the function setting, setting information as shown below:

X-200 PRO
>VEHICLES OPTION ABOUT SELFTEST

1.4.1 System Setting

Select OPTION, then you can set the language、contrast、 Metric / Inch, data logging, as shown below:

OPTION
>LANGUAGE CONTRAST METRIC / INCH DATA LOGGING

1.4.1.1 Language option

The device supports Chinese, English, Portuguese, Russian, Spanish, and Traditional Chinese, etc.

1.4.1.2 Contrast

According to the environment, adjust the brightness of the screen by the left and right buttons, as shown below:

OPTION
70%

1.4.1.3 Metric / Inch

According to your needs, select the Metric/Inch through the up and down keys, and press ENTER to switch, as shown below:

METRIC / INCH
>METRIC INCH

1.4.1.4 Data Logging

If you have problems during the testing, please use the Data Recording function to record the testing process and send the data to us. If you want to use Data Record function, select “ON” by the up and down keys and press ENTER to switch, as shown below:

Note: Please select "OFF", otherwise there will be not enough capacity in TF card after using it for a long time.

DATA LOGGING
>OFF ON

1.4.2 System Information

System information includes product serial number, hardware version, software version, release date, register password, etc.

ABOUT
>S/N: 813300000010 HARDWARE VERSION: 3.23 SOFTWARE VERSION : 3.00 RELEASE DATE: 2015/03/03 PASSWORD: 12044354
WWW.OBDSTAR.COM

1.4.3 Device self-testing

Device self-testing includes screen display testing, keyboard testing, hardware self-testing, etc. If it cannot show enough pictures on the screen, keyboards not work, and hardware self-testing not get through, please return the X-200 PRO to the manufacturer.

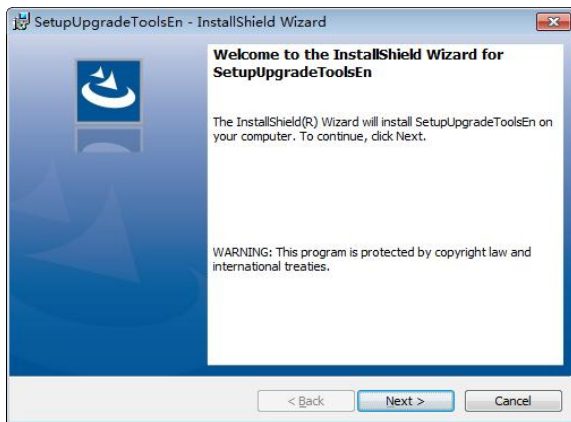
SELFTTEST
>DISPLAY TEST KEYBOARD TEST

Chapter 2: How to update software for X-200 PRO

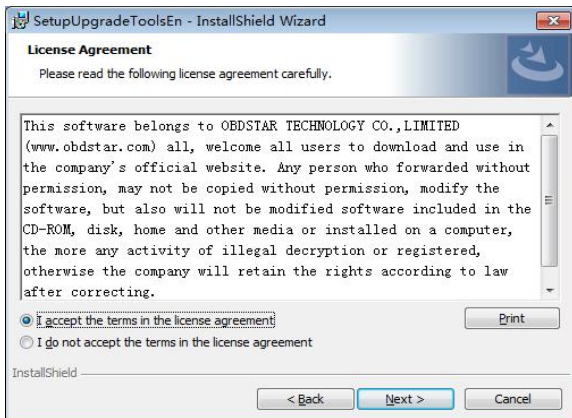
2.1 Update tool software installation

Long in our website:<http://en.obdstar.com> and click “One key Upgrade”. Download the update tool and diagnostic software,double click,then go to the next step:

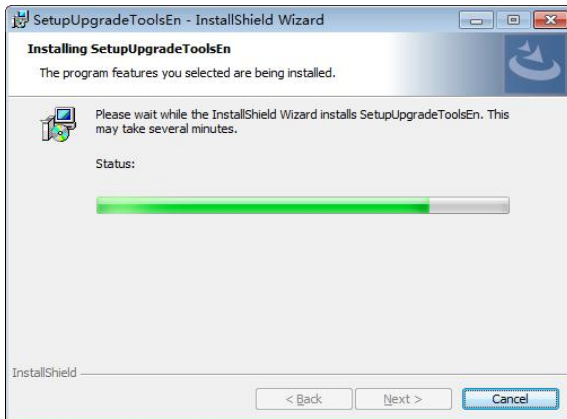
Step 1: Click “Next”



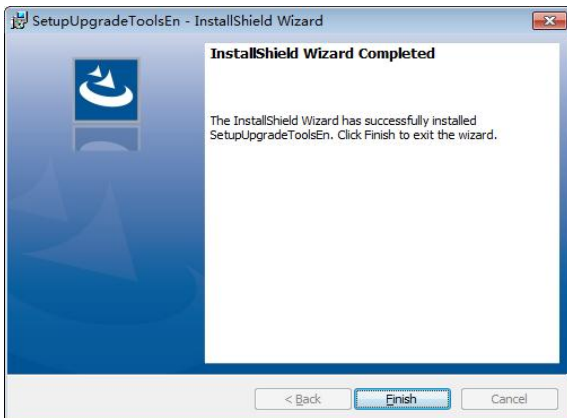
Step 2: Click “Next”




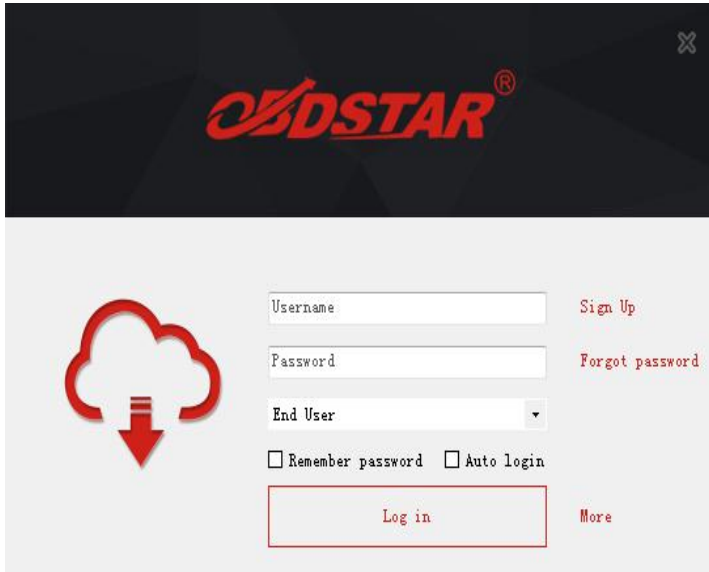
Step 3: Wait for several minutes then the installation finished




Step 4: Click "Finish"



After Update Tool installation completed, click the Update Tool  software icon on desktop to start the update tools. The main interface is as shown below:



DSTAR[®]



Username

Password

End User

Remember password Auto login

[Sign Up](#)

[Forgot password](#)

[More](#)

2.3 Software updating

Operation steps as following:

Step 1: Remove the TF card from your device.

Insert your TF card into computer.

Step 2: Open update tool and login

Step 3: Click the source menu, choose the program you want to update, click it and confirm.

Step 4: Click and select all the software then click “update”.

Step 5: Wait for several minutes then the updating finished.

Product sn: 81438888888 Language: English Memory card: L:\

Select all (Alt+ 2) Format memory card (Alt+ 1) Available memory: 3899M

Refresh (Alt+ 5) Upgrade (Alt+ 3) Cancel

No.	Software Name	The latest version	Current version	Date Time	Select version	Select language	Progress
1	HISSAN CALCULATOR	8.1	8.1	2017-07-13	8.1	English	0%
2	X-100 PRO DISPLAY	8.5	8.5	2017-07-13	8.5	English	0%
3	AUDI OBD	30.18	30.16	2017-07-13	30.18	English	0%
4	BENTLEY OBD	30.06	30.04	2017-07-13	30.06	English	0%
5	BENZ OBD	30.34	30.32	2017-07-26	30.34	English	0%
6	CHERY IMMO	33.54	33.53	2017-07-13	33.54	English	0%
7	CHRYSLER IMMO	30.58	30.56	2017-07-13	30.58	English	0%
8	CHRYSLER OBD	30.13	30.12	2017-07-13	30.13	English	0%
9	CITROEN OBD	30.65	30.64	2017-07-13	30.65	English	0%
10	EEPROM	30.09	30.07	2017-07-13	30.09	English	0%
11	FIAT IMMO	31.41	31.39	2017-07-26	31.41	English	0%
12	FIAT OBD	30.20	30.16	2017-07-18	30.20	English	0%
13	FORD IMMO	30.08	30.06	2017-07-13	30.08	English	0%
14	FORD OBD	30.04	30.02	2017-07-13	30.04	English	0%
15	GEELY OBD	30.23	30.21	2017-07-13	30.23	English	0%

Account: [icon] Sign out Upgrade progress: 0% Number of selected software:68

Note: For new update software and questions during updating, please contact your distributor.